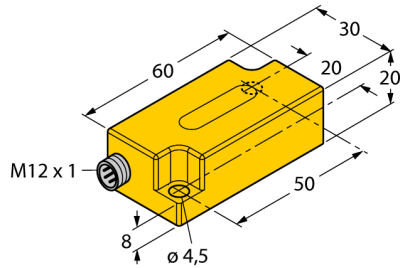
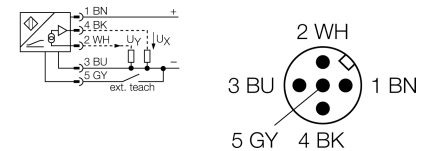


**Inclinometer
B2N45H-Q20L60-2LU3-H1151**



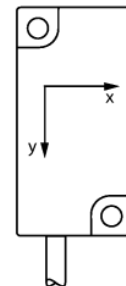
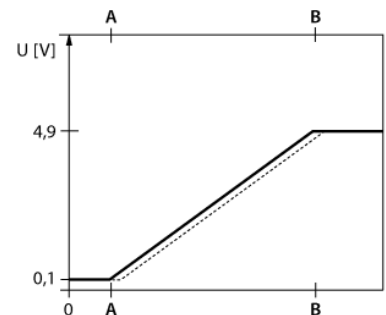
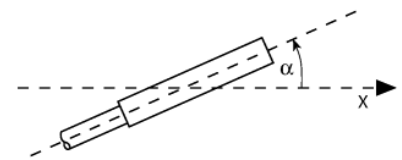
- Plastic, PC
- Zero point calibration +/- 15°
- Two analog outputs
- M12 x 1 male connector

Wiring diagram



Functional principle

Inclination is determined by a wear-free semi-conducting sensor element.



Type code	B2N45H-Q20L60-2LU3-H1151
Ident no.	1534007
Measuring range	-45...+45°
Measuring range x-axis	-45...+45°
measuring range y-axis	-45...+45°
Repeatability	≤ 0.2 % of measuring range A - B ≤ 0.1 %, after warm-up 0.5 h
Absolute accuracy (at 25 °C)	+/- 0.5 °
Temperature coefficient typical	0.03 °/K
Resolution	≤ 0.1 °
Ambient temperature	-30...+70 °C
Operating voltage	10...30VDC
No-load current I ₀	≤ 20 mA
Rated insulation voltage	≤ 0.5 kV
Wire breakage / Reverse polarity protection	yes/ yes
surge protection	-48...48VDC [U _{b,max}]
Output function	5-pin, analog output
Voltage output	0.1...4.9VDC
Load resistance voltage output	≥ 40 kΩ
Outout impedance	99...105Ω
Voltage output	Short circuit proof U _s (= 10...30 VDC)
Response time	0.1 s time for the output signal to achieve 90% full scale if the angle changes from -45° to +45°
Construction	rectangular, Q20L60
Dimensions	60 x 30 x 20 mm
Housing material	plastic, PC
Connection	male, M12 x 1
Vibration resistance	55 Hz (1 mm)
Shock resistance	30 g (11 ms)
IP Rating	IP68 / IP69K
MTTF	203 years acc. to SN 29500 (Ed. 99) 40 °C

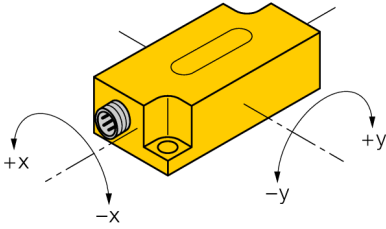
Inclinometer
B2N45H-Q20L60-2LU3-H1151

TURCK

Industrial
Automation

Mounting instructions / Description

Tilt angle




Inclinometer
B2N45H-Q20L60-2LU3-H1151

TURCK

Industrial
Automation

Accessories

Type code	Ident no.	Description	Design
VB2-SP3	6999085	Teach adapter	
SG-Q20L60	6901100	Protective frame for Q20L60; protects against mechanical impact; stainless steel	