



Certificate of Frame Rate Accuracy

EQUIPMENT SERIAL NUMBER: 05-0317-1396

Certification Procedure:

The above camera design has been tested in accordance with the procedures and specifications for the equipment's functional accuracy. The results were analyzed using IDT's Sync Test and GPS.

Characteristics Checked: Frame rate accuracy @ 1000 fps Within $\pm .015\%$

Certification Results:

The above equipment for which this certificate has been issued complies with the above requirements.

Test Equipment:

The testing was carried out using standards and equipment that are subject to regular verification and are traceable to the National Institute of Standards and Technology.

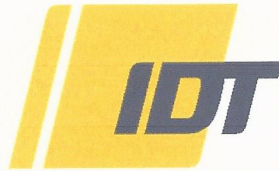
InStock Wireless Components GPS Signal Splitter & IDT Sync Tester.

Allen Pinos
Calibrating Technician

3/28/17
Date of Verification

IDT, Inc. warrants the equipment for which this Certificate of Frame Rate Accuracy was issued for a period of one year from the date of system installation. It is recommended that the above listed processor be certified on an annual basis. Certification may be performed at the IDT factory in Pasadena, California or a designated Service Center.

Integrated Design Tools Inc, 1202 E. Park Ave, Tallahassee, FL 32301



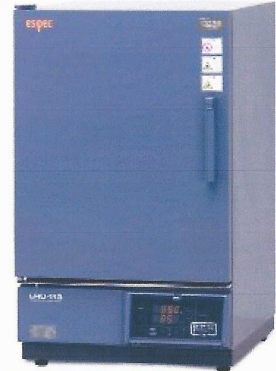
Environmental Chamber Test Certificate

EQUIPMENT SERIAL NUMBER: 05-0317-1396

Certification Procedure:

The above camera design has been tested in accordance with the procedures and specifications for the equipment's functional accuracy.

Characteristics Checked: Camera Image @ -30°C - 50°C



Certification Results:

The above equipment for which this certificate has been issued complies with the above requirements.

Test Equipment:

The testing was carried out using standards and equipment that are subject to regular verification and are traceable to the National Institute of Standards and Technology.

ESPEC, Model: LHU-113

Allen Pinos
Calibrating Technician

3/28/17
Date of Verification

IDT, Inc. warrants the equipment for which this Environmental Chamber Test Certificate was issued for a period of one year from the date of system installation. It is recommended that the camera be certified on an annual basis. Certification may be performed at the IDT factory in Pasadena, California or a designated Service Center.

Integrated Design Tools Inc, 1202 E. Park Ave, Tallahassee, FL 32301



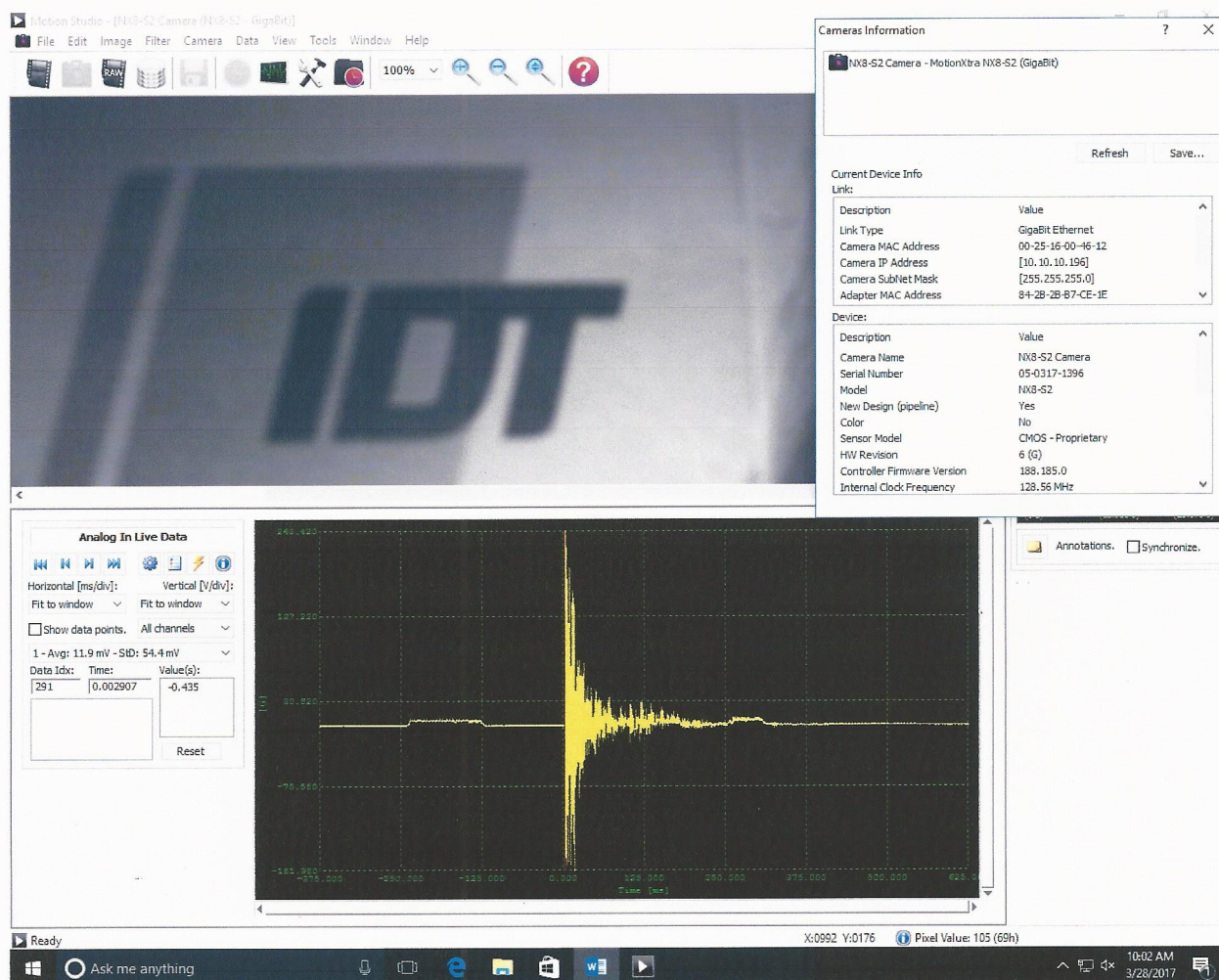
Camera Impact Test Certificate

Technician: Allen Pinos

Performed: 3/28/2017 10:03 AM

Serial #: 05-0317-1396

Test Data:



Copyright (c) 2000-2009 IDT, Inc. - ALL RIGHTS RESERVED

<http://www.idtvision.com/>



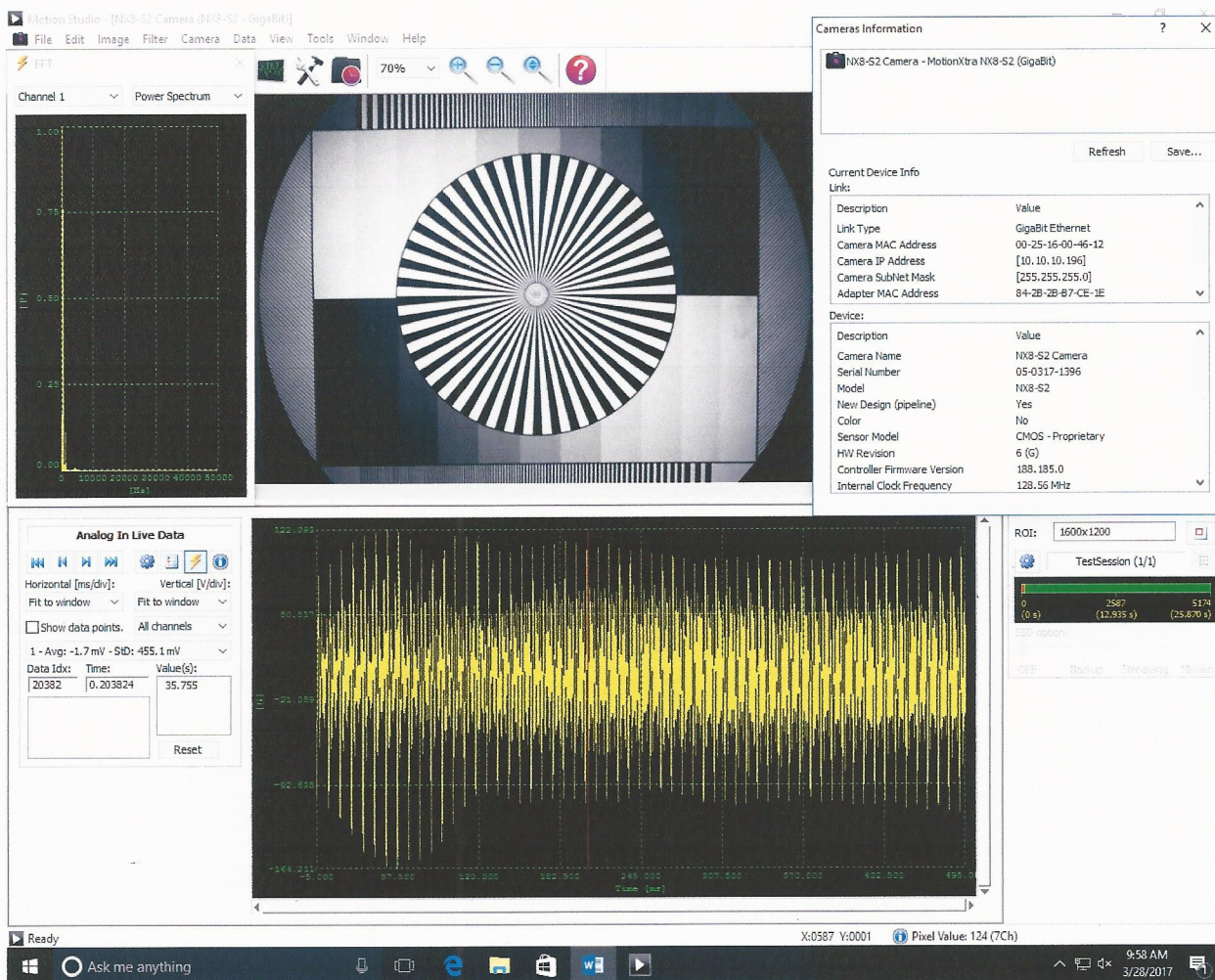
Camera Vibration Test Certificate

Technician: Allen Pinos

Performed: 3/28/2017 9:58 AM

Serial #: 05-0317-1396

Test Data:



Copyright (c) 2000-2009 IDT, Inc. - ALL RIGHTS RESERVED

<http://www.idtvision.com/>